

dLSoft

Barcode and Labelling software for Windows

dBarcode-32 SDK

Developers Kit for barcodes

- *the complete barcode image creator for your Windows programs, includes an Active DLL, Delphi Components and an OLE-2 server.*
- **Create Barcode images for Windows applications at the press of a button**
- **Optionally include text, select colours, generate checksums**
- **Supports EAN, UPC, 2/5, Code 39, Code 128, Codabar, RM4SCC, and many more**
- **Ideal for creating barcodes within MS Access 97/2000/XP**

dBarcode-32 Developers Kit for Visual Basic, VBA, Delphi and Visual C/C++

dBarcode-32 Developers kit includes an Active DLL and full instructions for writing your own barcode applications in Microsoft C/C++, Delphi, Visual Basic or VBA, and Visual Studio.NET. An OLE-2 server for OLE-enabled applications is included.

Each unit enables the developer to set the code, code type, size, font details, orientation, background and foreground colours, and to enable or disable text characters all from within their application.

Supports EAN-13, EAN-8, UPC-A, UPC-E, ISBN, ISSN (+ 2 and 5 digit supplementaries), EAN-128, ITF-14, ITF-6, Codabar, Code-39, Extended Code 39, Code 93, Code 11, CodeB, Code 128, 2of5, 3of9, MSI, Royal Mail 4 State, PostNet, Telepen and many more – over 50 coding schemes.

Automatically calculates and includes checksums for codes which use them, set bearers, margin indicators, etc.

Each unit generates both a pattern string for bars and spaces and a metafile picture containing the barcode image and (where enabled) the code text. The picture may be displayed, printed, saved or passed to the clipboard by the user's code.

Source code for demonstration applications included.
Full HELP system.

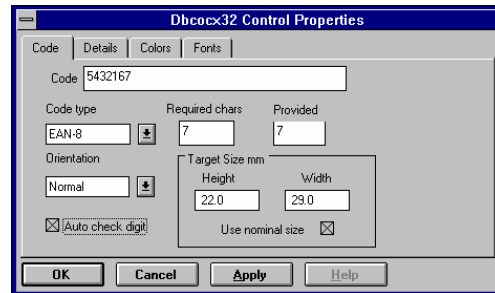
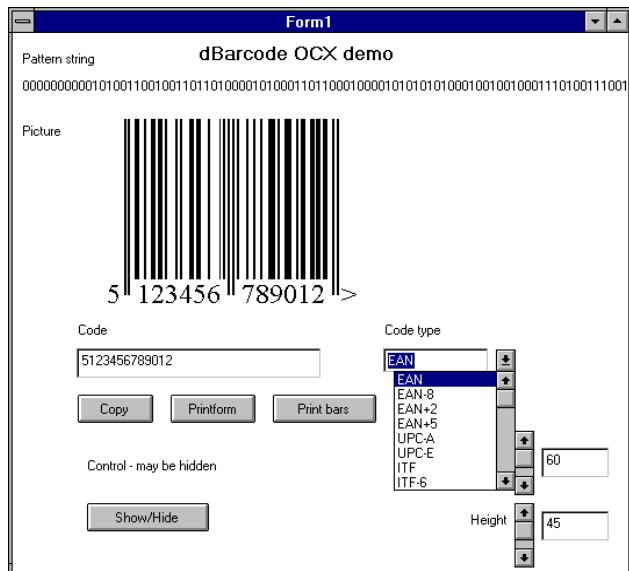
Redistributable version does not require licence file.
dBarcode-2D DK available for 2D barcodes.

System requirements:

A PC running Microsoft Windows 9x/NT/2000/XP or later.
DLL unit may be used from Visual Basic or VBA (eg. Access 97/2000/XP), Visual C/C++, Visual Studio.NET or compatible Windows development system. Delphi Components require Delphi version 5 or later.

Testware versions available at WWW.DLSOFT.COM

A demo application view - source code provided



Available from: